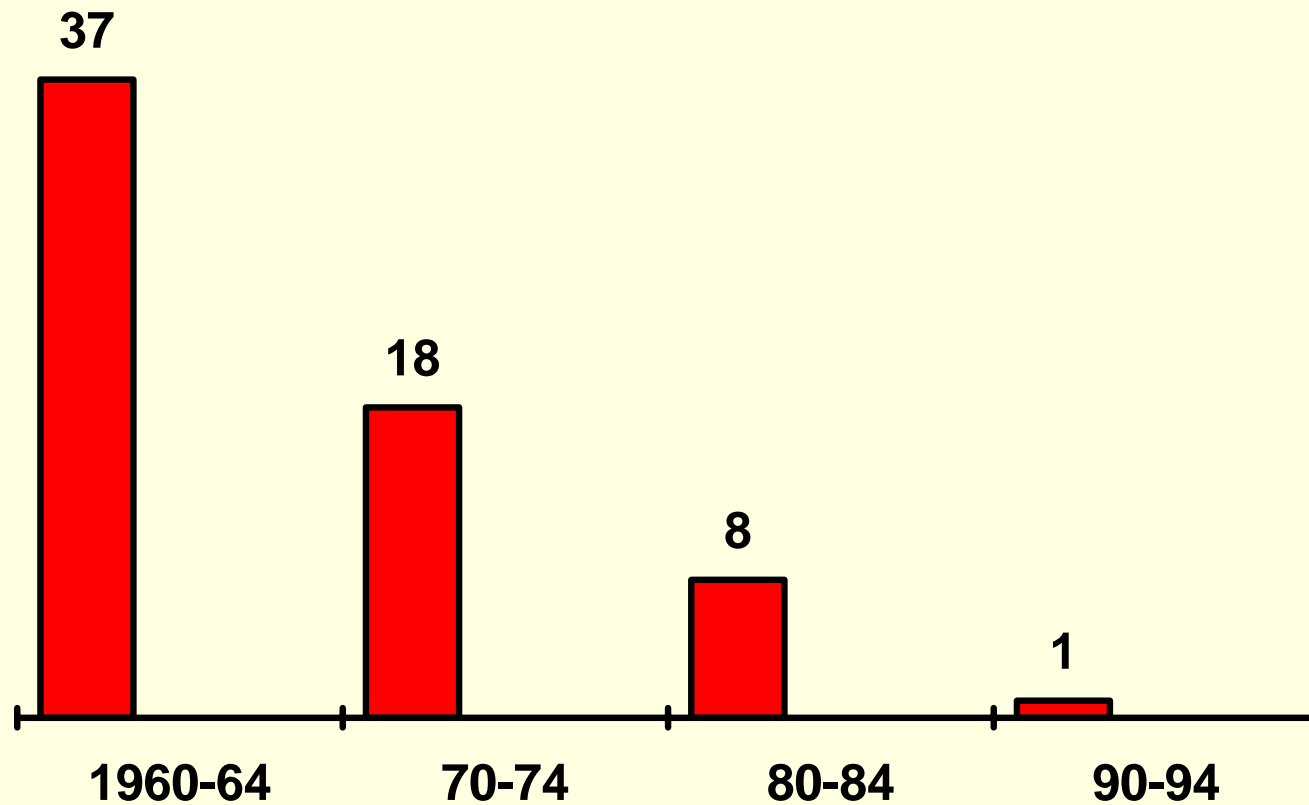
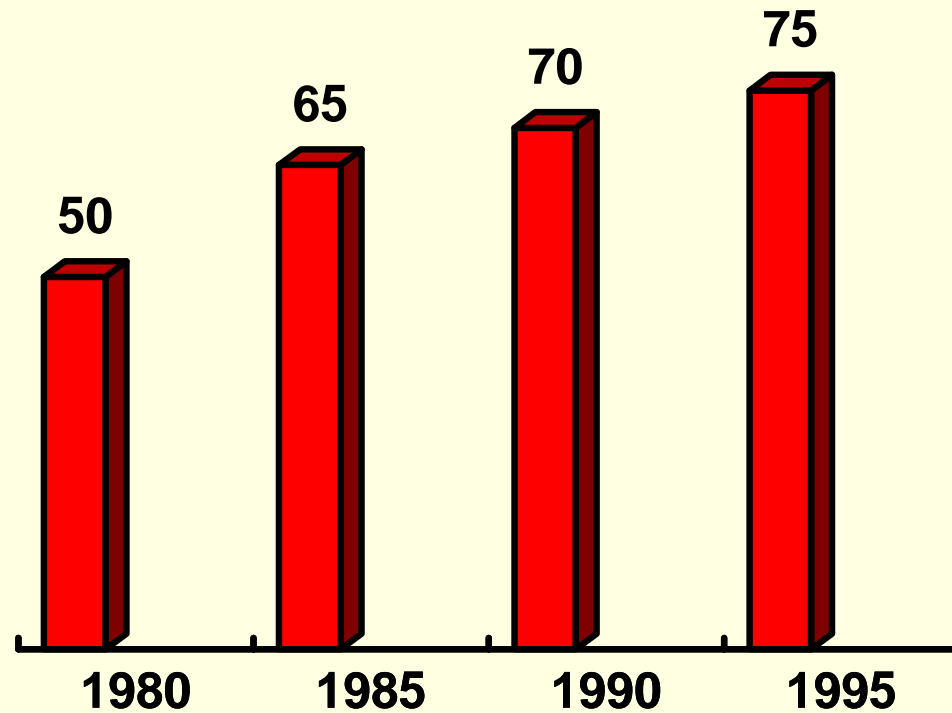


Sverige GC-salp % av alla salp

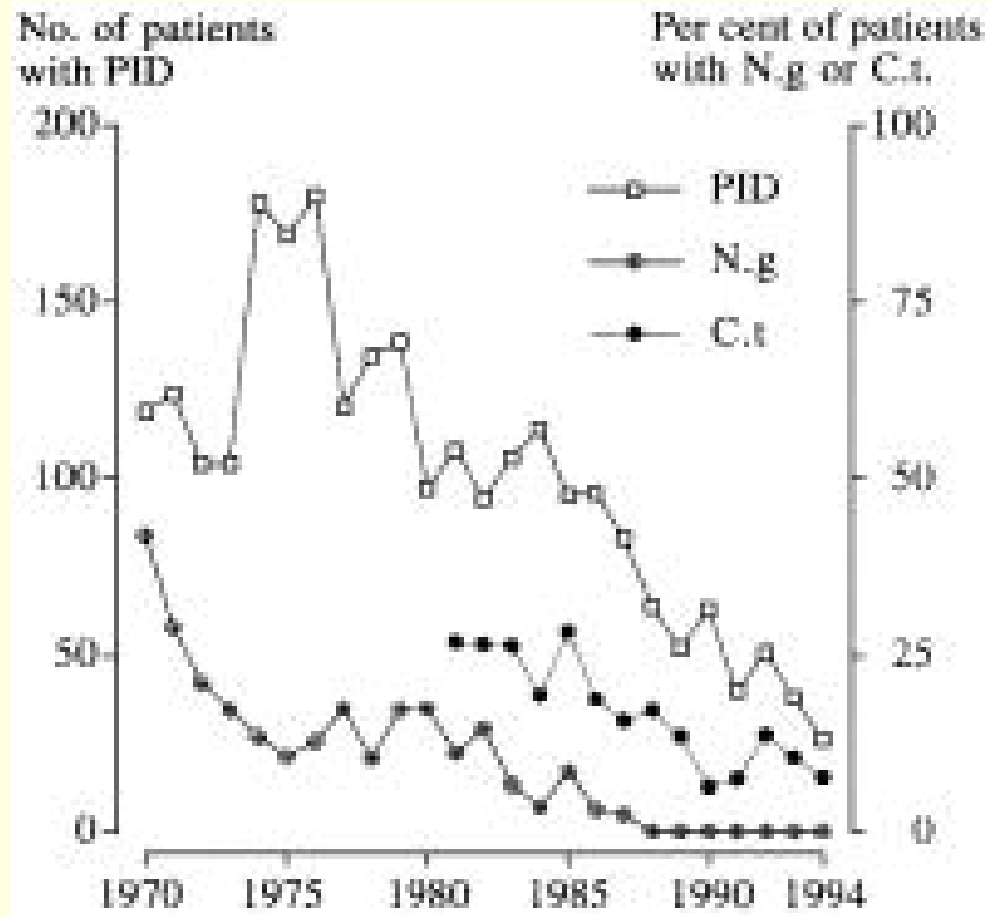


Sverige

Klamydia-salp % av alla salp



Kamwendo et al 1996



Bjartling et al Malmö 2000

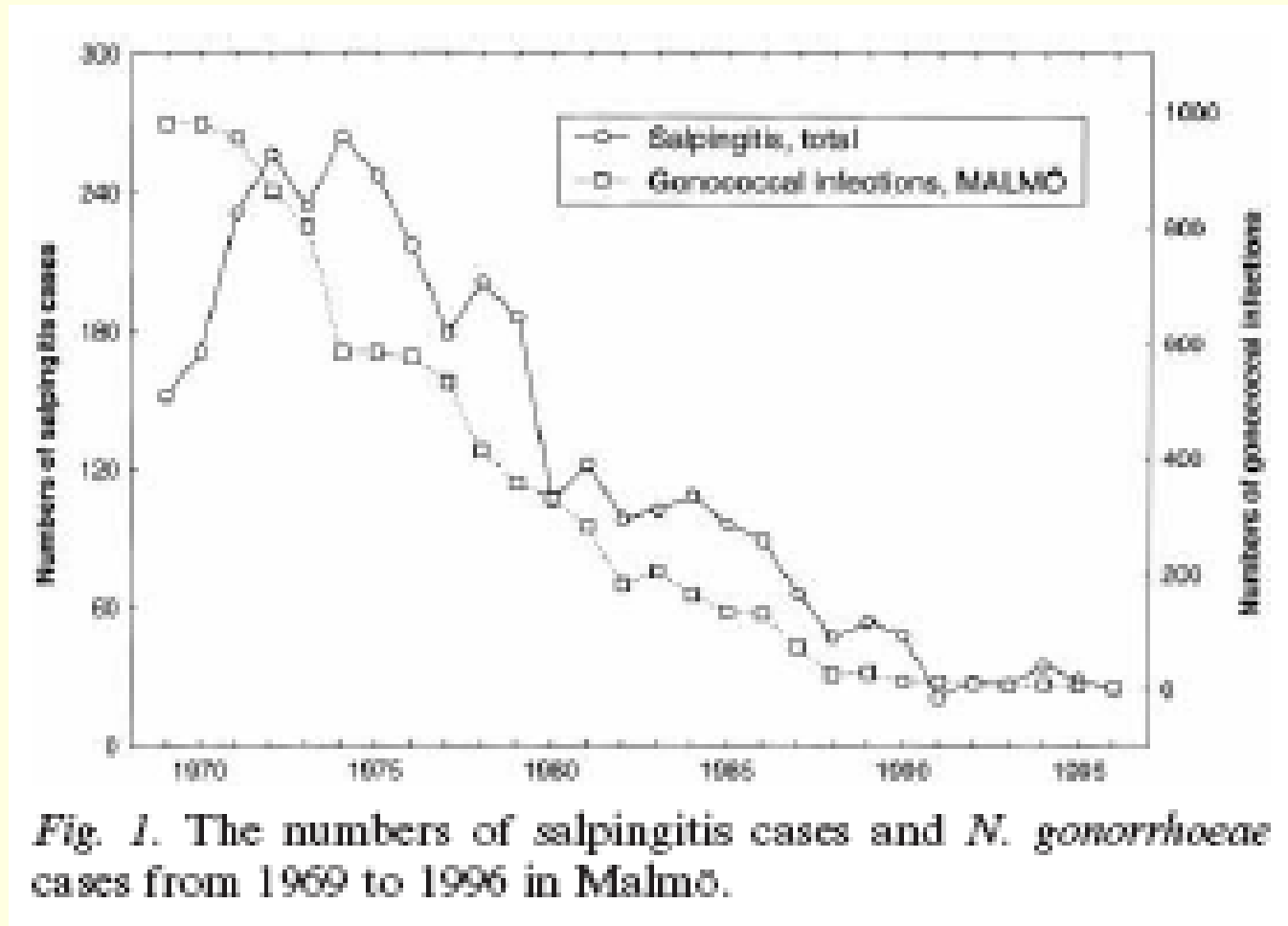
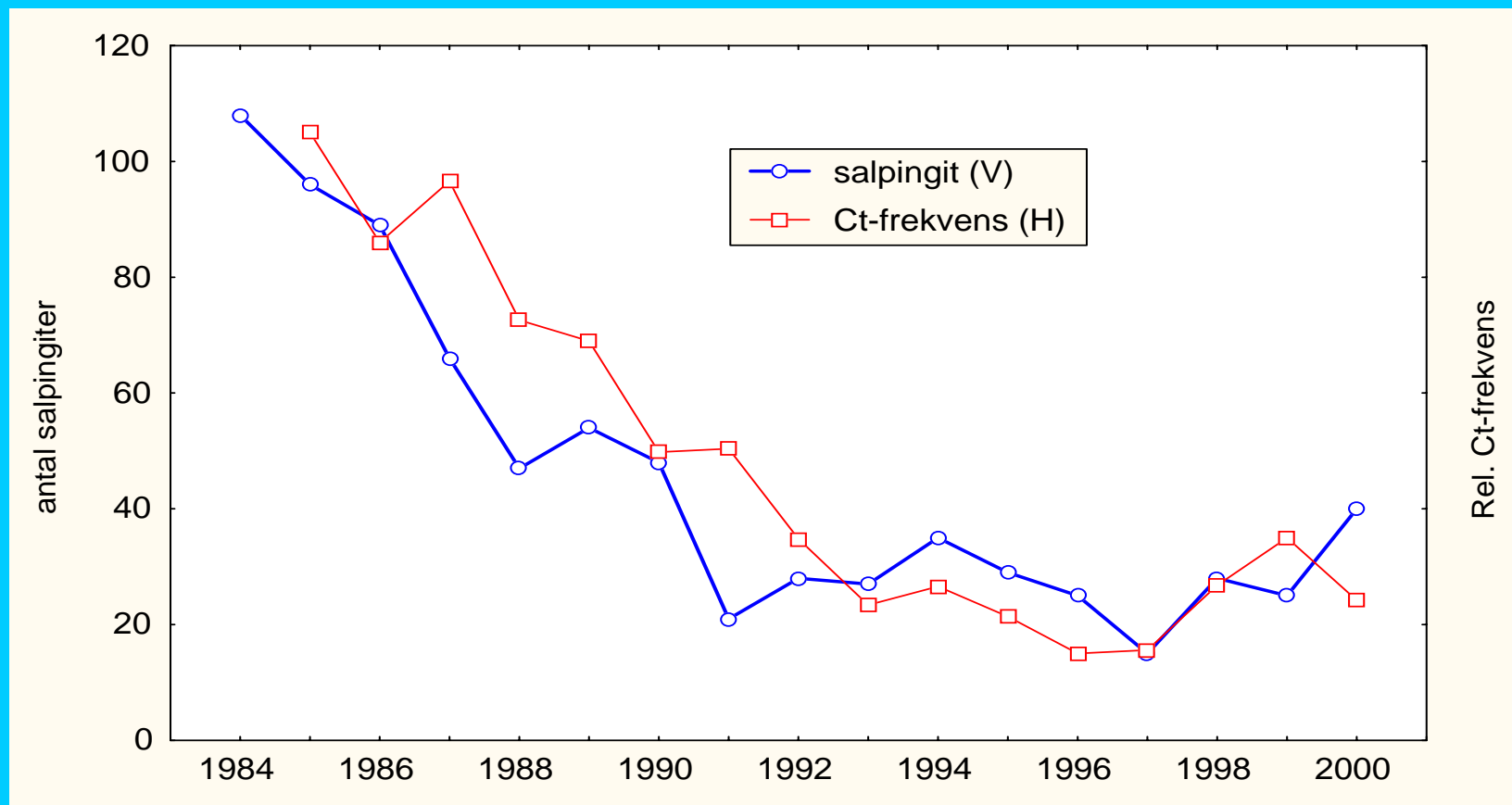


Fig. 1. The numbers of salpingitis cases and *N. gonorrhoeae* cases from 1969 to 1996 in Malmö.

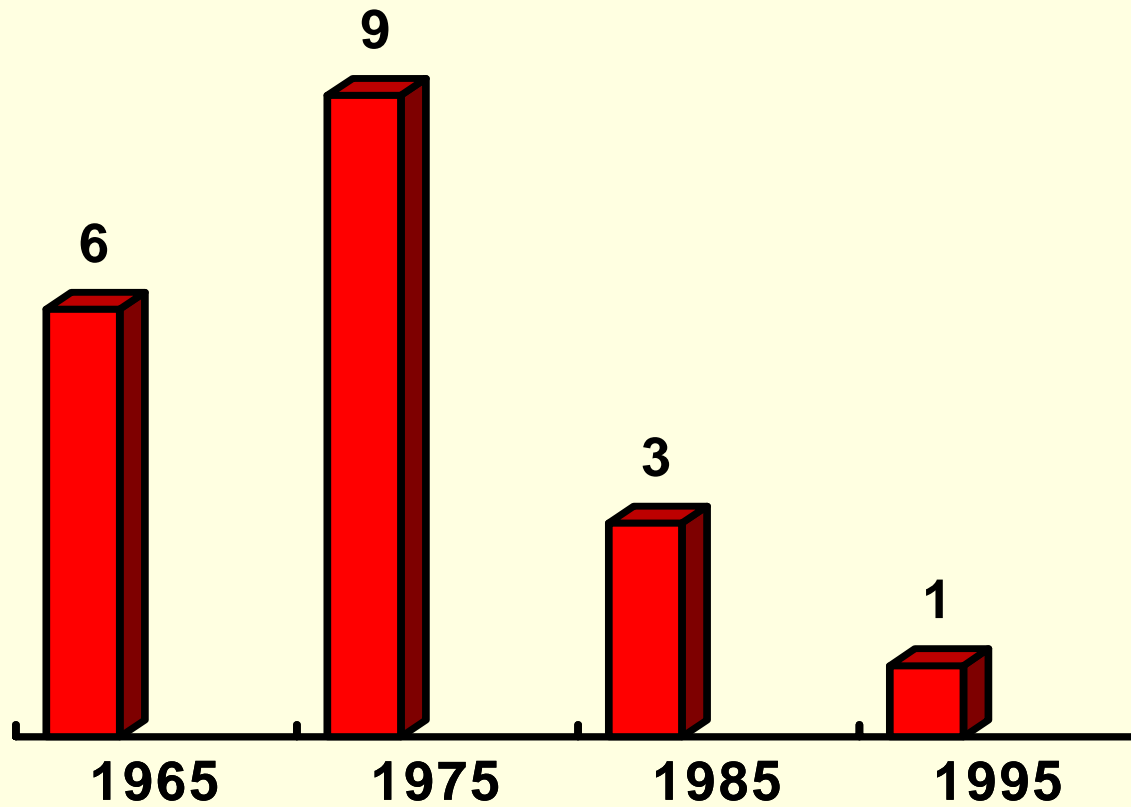
ÄGGLEDARINFLAMMATION OCH CHLAMYDIA TRACHOMATIS I MALMÖ



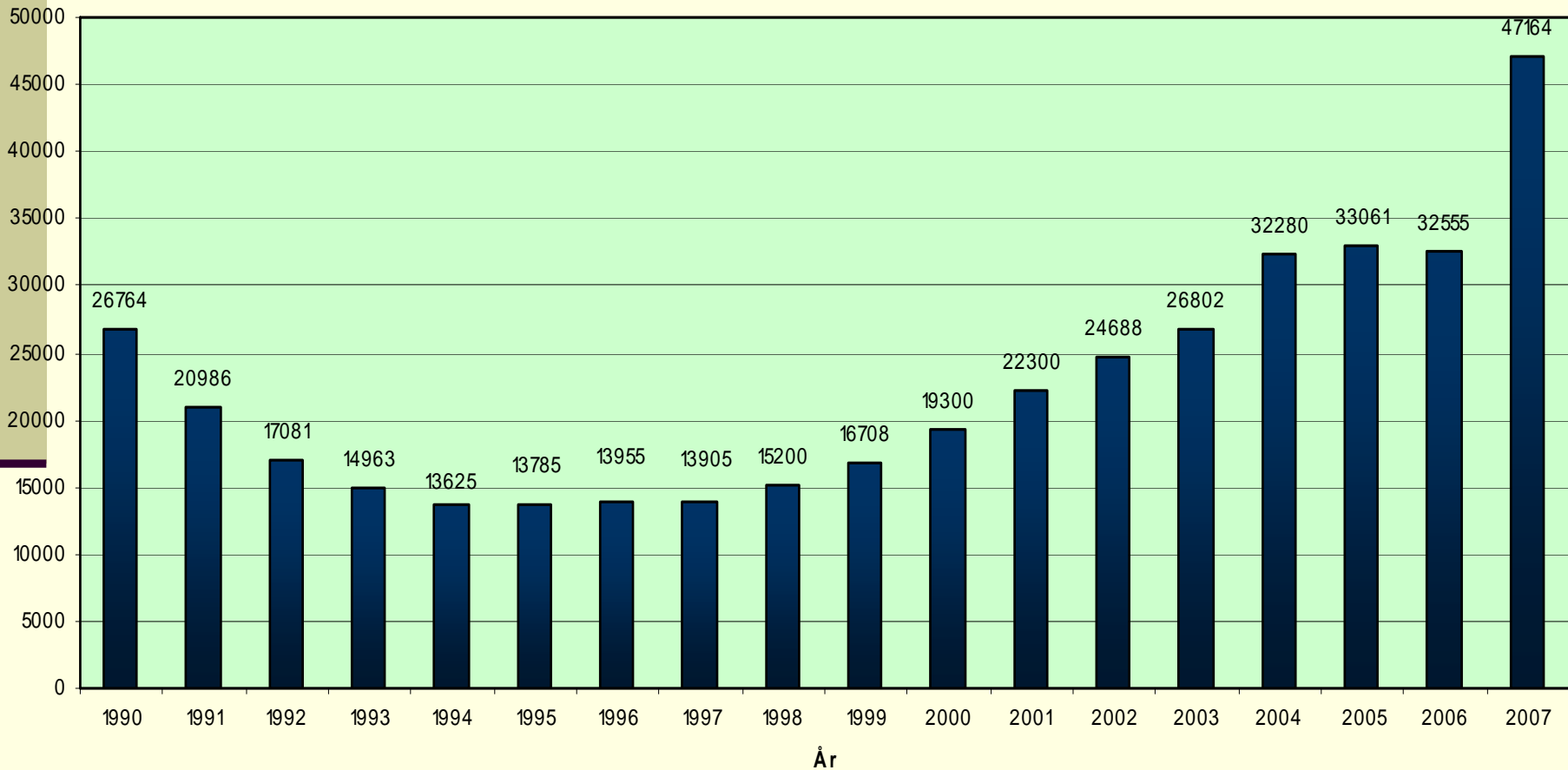
Bjartling

Sverige

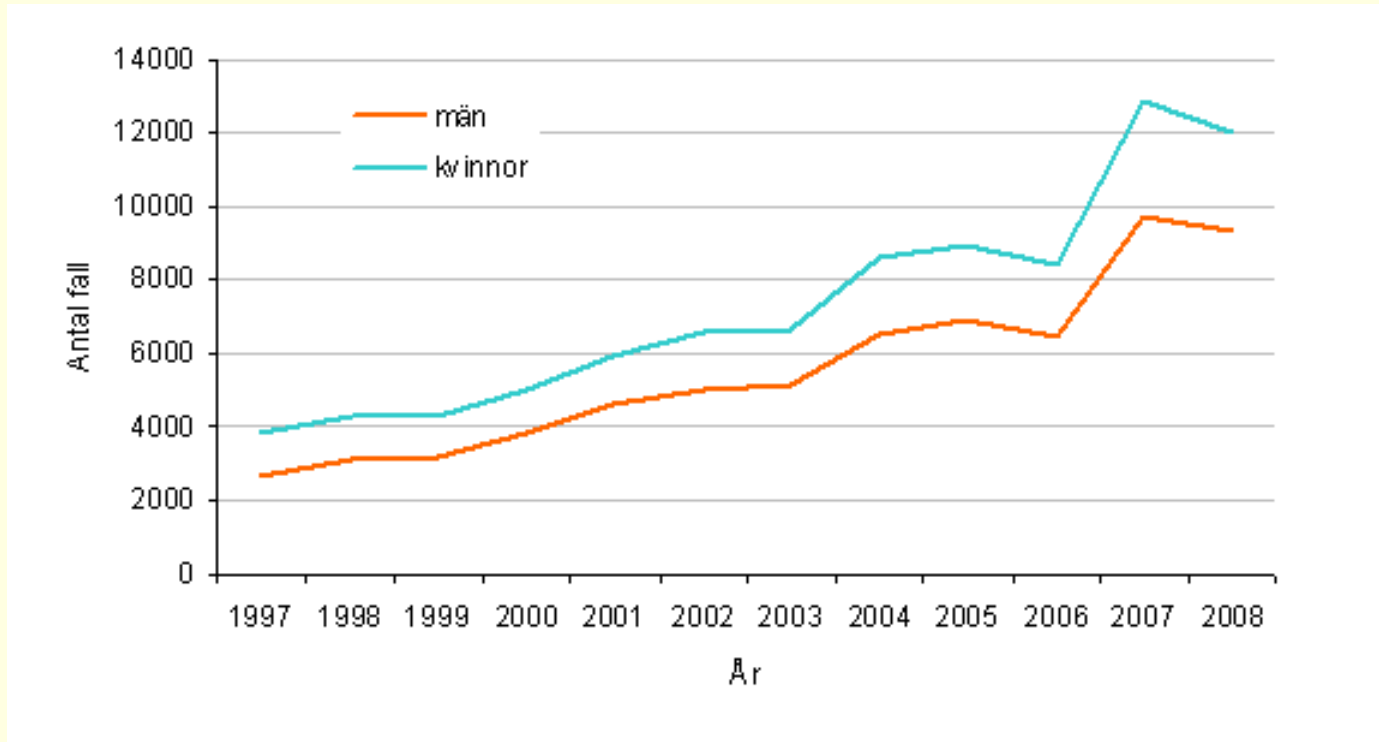
% som haft salp före fyllda 20 år



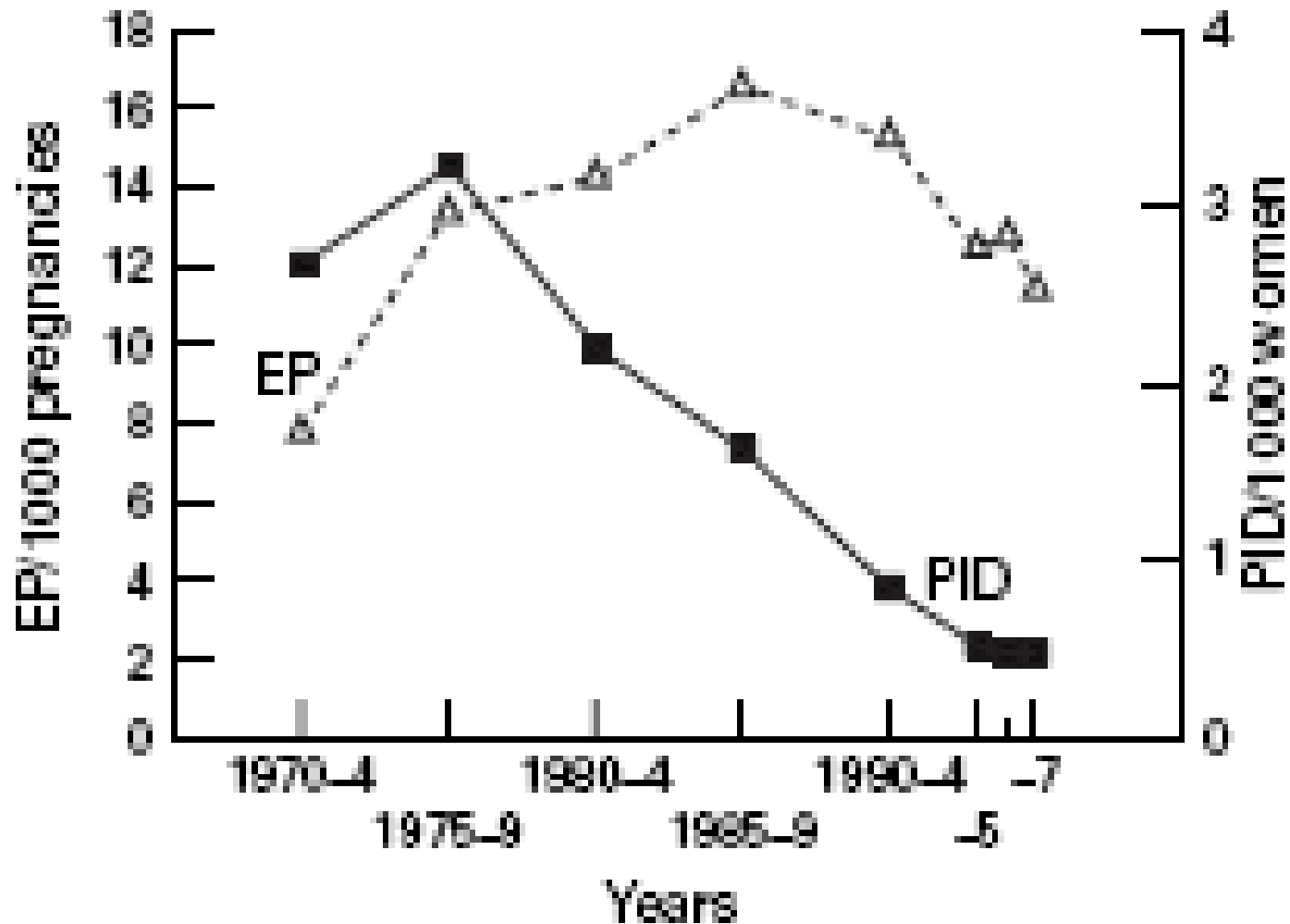
Klamydia Sverige 1990-2007



Klamydia Sverige 1997 – juli 2008

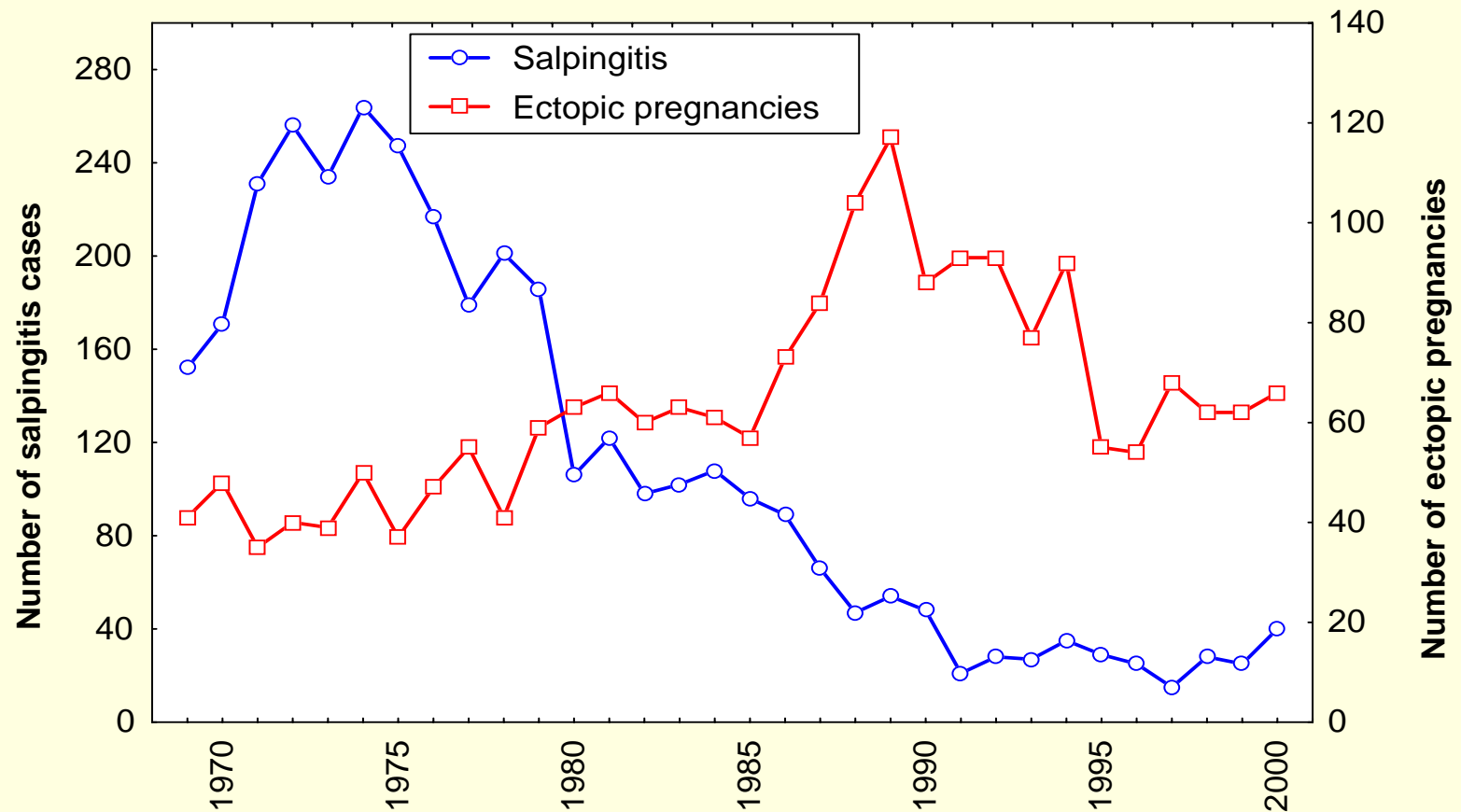


Kamwendo et al Örebro 2000



ÅRLIGT ANTAL FALL AV ÄGGLEDARINFLAMMATION OCH UTOMKVEDSHAVANDESKAP I MALMÖ

Bjartling et al Malmö
2000



Bakken et al 2008

Epidemiologisk institutt Trondheim

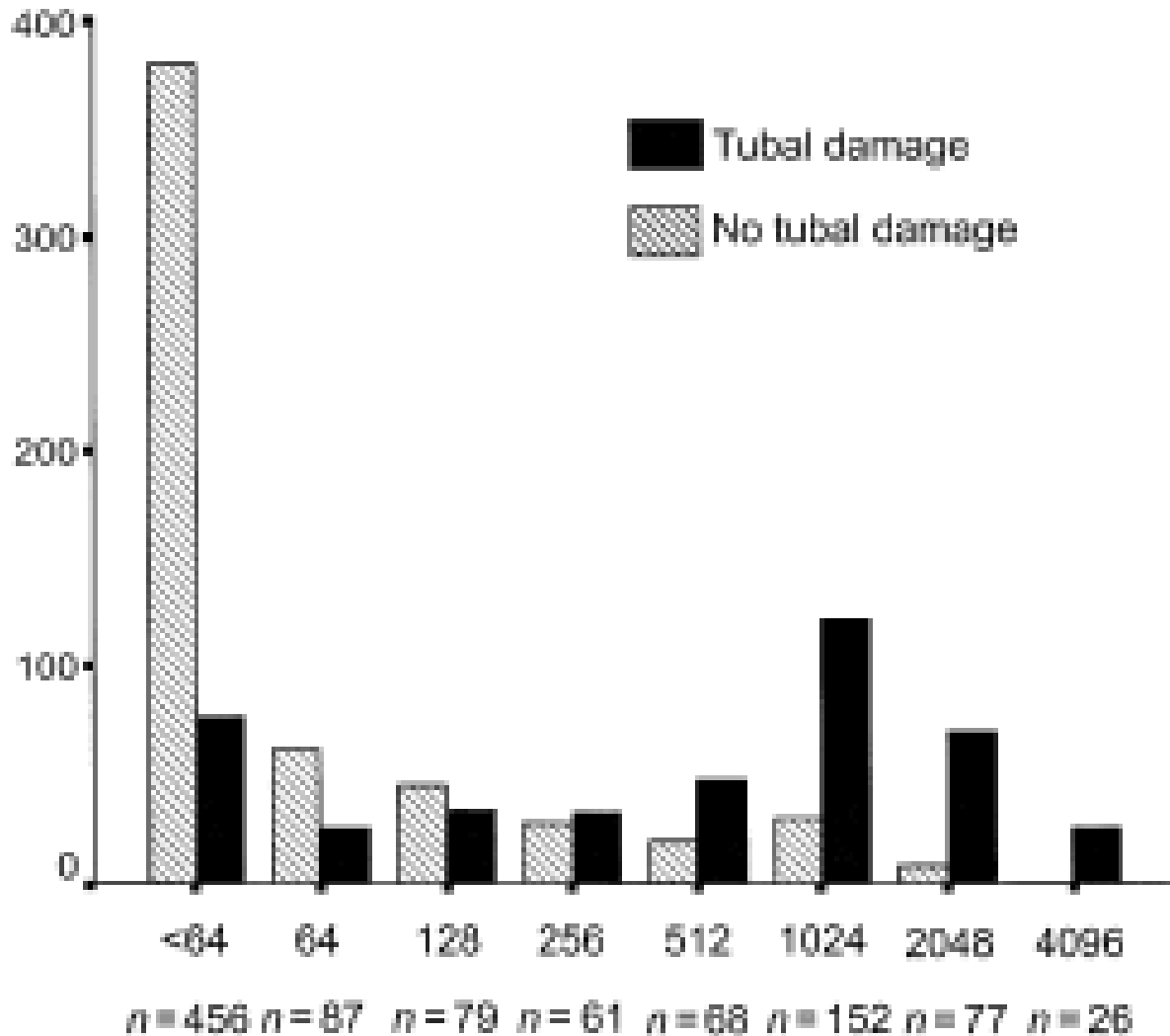
- 20,762 women born during 1970-1984 who were tested for CT during 1990-2003
- Linked CT data to data on ectopic pregnancies and births during 1990-2004

Bakken et al 2008

- Negative tests only - 9.6 births per 100 person-years
- At least 1 positive test - 10.2 births per 100 person-years
- Hazard ratio adjusted for age at first test, 1.07; 95% CI, 1.01-1.12
- X-incidens 0.24 vs. 0.13 per 100 person-years; hazard ratio adjusted for age at first test and parity, 1.82; 95% CI, 1.27-2.60

Akande et al Bristol 2003

Chlamydia-serologi infert-skopi



Idahl et al Umeå 2004

- IgG-pos 59/244 infertila kvinnor 24%
- IgG-pos 38/244 gravida kontroller 16%

Naturalförlopp Klamydia-DNA cx

Molano et al Bogota, Colombia 2005 (N=82)

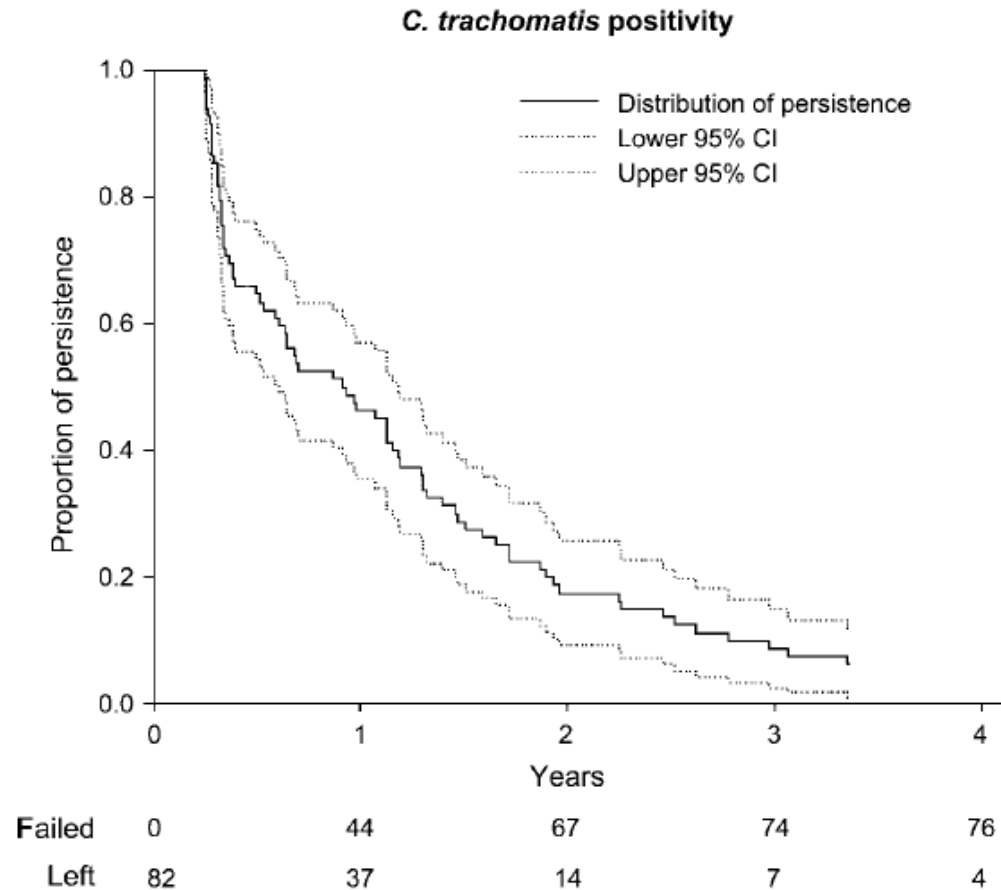
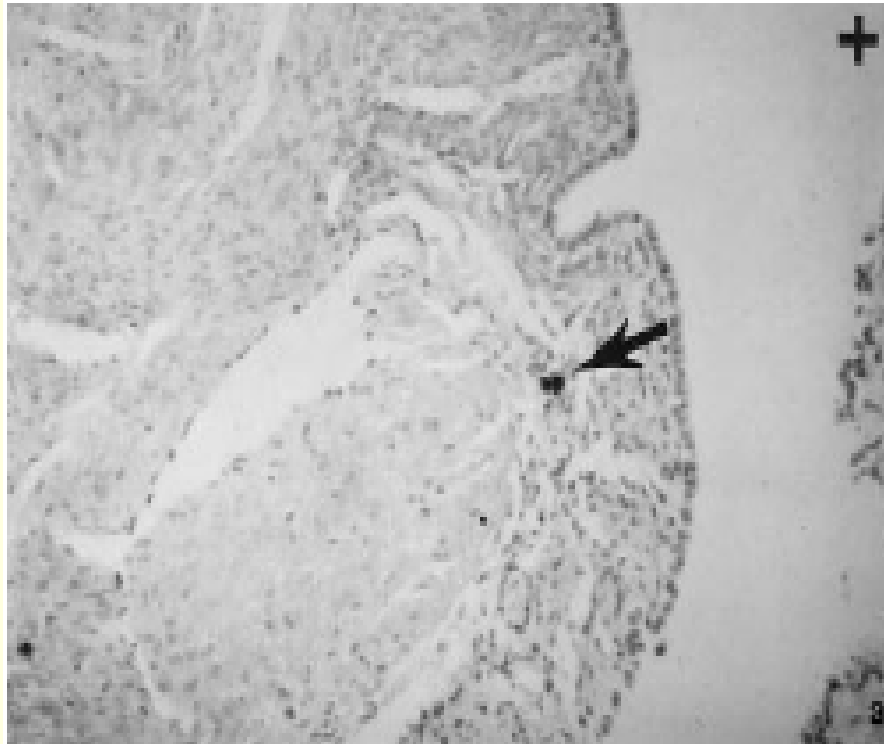


Figure 1. Persistence of *Chlamydia trachomatis* infection as a function of time. CI, confidence interval.

Toth et al New York 2000



- Ovariebiopsi 19 pat skopifynd tubarfaktor *negativ* klam-odling
- Klamydia-DNA hos 7
- Bild: Klamydia-DNA *under* germinalepitelet
- **TYST SALPINGIT**

Chlamydia heat-shock protein 60 (chsp60)

- Mycket antigen
- Lymfocyt/monocyt-aktivering
- Relaterat till tubarskada *oberoende av behandling*
- Salpingit (skopi)
- HSP+
- Hög frekvens tubarskada (HSS)
- HSP-
- Låg frekvens tubarskada

Bjartling et al 2007 – X

Antibodies to *C. trachomatis* by MIF and antibodies to chlamydial and human hsp60 by EIA in patients and matched controls of normal pregnant women

	Patients, <i>N</i> = 55 (%)	Controls, <i>N</i> = 55 (%)	<i>p</i> -value
Ct-IgG (MIF \geq 64)	22 (40)	13 (24)	n.s.
Ct-IgA (MIF \geq 64)	11 (20)	2 (4)	0.05
Ct-hsp60 (EIA-OD \geq 0.6)	19 (35)	16 (29)	n.s.
Human-hsp (EIA-OD \geq 0.4)	7 (13)	9 (16)	n.s.
Cpn-IgG (MIF \geq 64)	35 (64)	30 (55)	n.s.
Ct-IgG \times Ct-hsp60	16 (30)	4 (7)	0.006

Ct: *C. trachomatis* and Cpn: *C. pneumoniae*.

**PCR Chlamydia-DNA i
tubarvävnad: 0 av 55**

Endogen salp - Tuboovarialabscess



- Ngt äldre kvinna (35-55)
- Sällan STI
- Patientens egen vaginalflora
- Blandinfektion
- Anaerober vanliga
- ***Spiral? (långvarig användning?)***